

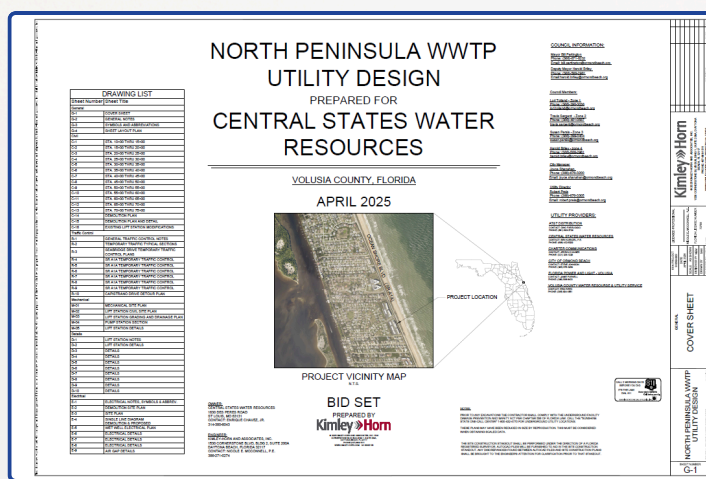
CASE STUDY

Upon acquiring the North Peninsula wastewater treatment facility, **CSWR-Florida inherited a system plagued by years of neglect, chronic noncompliance, and compounding regulatory violations.** The facility had amassed a backlog of formal warnings and consent orders issued by the Florida Department of Environmental Protection (FDEP) and Volusia County. Operational and structural deficiencies were widespread: **unmaintained groundwater monitoring wells, severe corrosion throughout the steel tankage, and persistent odor and noise complaints** from the surrounding community. Compounding these issues was a consistent lack of staffing, **inadequate maintenance of the rapid infiltration basins, and missing compliance monitoring reports**—resulting in a facility on the brink of collapse.

To stabilize the site, **CSWR-Florida prioritized emergency repairs and infrastructure rehabilitation.** Failed blower systems were replaced, and floating debris was removed from the clarifier. Remote monitoring technology was installed to provide real-time system oversight, and a temporary flow equalization tank was added to manage hydraulic loading issues. All sludge was pumped from system tanks, chlorine contact chambers were patched to restore disinfection functionality, and broken disinfection equipment and electrical components were repaired or replaced. To address long-standing noise concerns, a sound-dampening barrier was constructed around the aeration blowers, improving conditions for nearby residents.

Recognizing that short-term repairs alone would not secure long-term compliance or operational reliability, **CSWR-Florida conducted a full alternatives analysis.** The resulting plan—currently in progress—calls for **decommissioning the outdated facility and installing an upgraded lift station to connect the system to the City of Ormond Beach's Publicly Owned Treatment Works.** This regionalization approach offers a permanent, cost-effective solution to environmental compliance issues while delivering modern, reliable service to North Peninsula customers.

While progress has been substantial, the work at North Peninsula continues. CSWR-Florida remains committed to completing the transformation of the system and closing the chapter on its long history of regulatory failure.



Case Study:
North Peninsula WWTTP

